

**MAY
2020**

MONTHLY TOURIST ARRIVALS REPORT

SRI LANKA TOURISM DEVELOPMENT AUTHORITY

www.slttda.lk

Photo courtesy of SLTDA, SLRC Lovingly Sri Lanka programme



SUMMARY

The total number of international tourist arrivals to Sri Lanka from January to May 2020 was 507,311. No tourist arrivals have been recorded for the month of May 2020 due to the termination of all passenger flight & ship arrivals into Sri Lanka from 18th March 2020. Total arrivals recorded from January to May 2019 was 945,377. In comparison to January to May last year (2019), a decline of 46.3 % has been recorded for the same period in 2020.

The largest source markets recorded for the period from January to May was India, followed by the United Kingdom and Russian Federation.

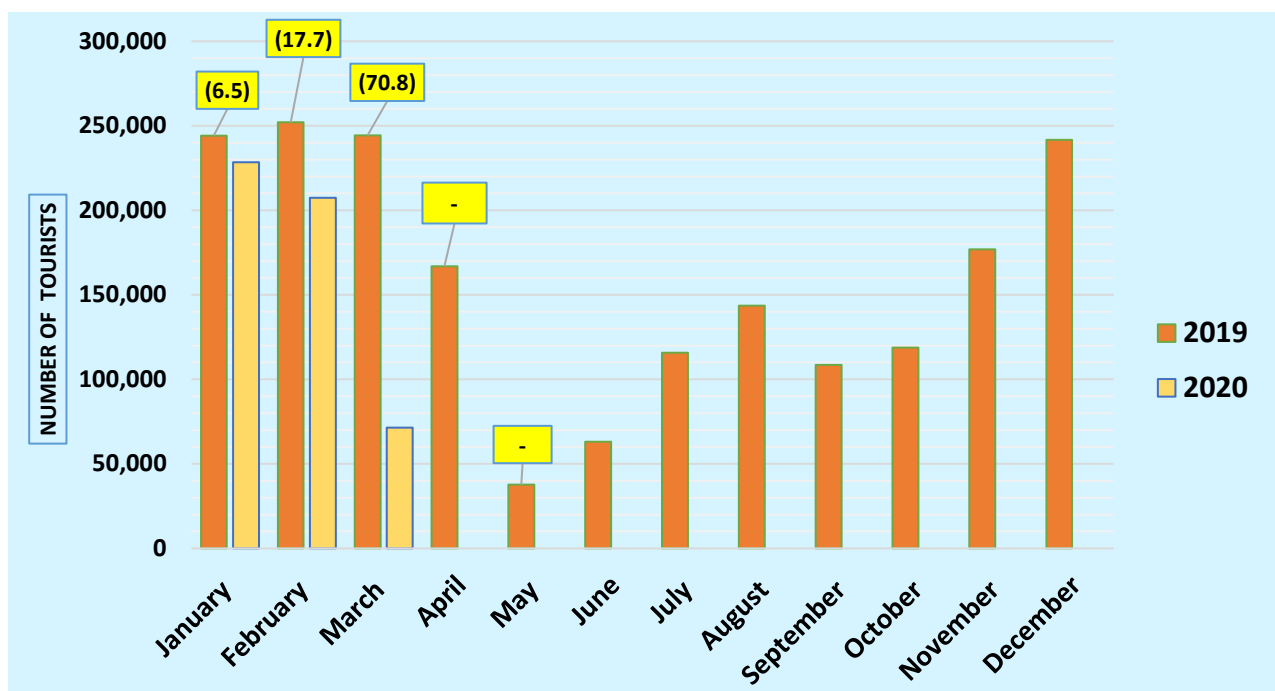
Almost 94.5 % of tourists travelled by air to Sri Lanka.

Month	2019	2020	% change 2019/20
January	244,239	228,434	(6.5)
February	252,033	207,507	(17.7)
March	244,328	71,370	(70.8)
April	166,975	0	-
May	37,802	0	-
June	63,072		
July	115,701		
August	143,587		
September	108,575		
October	118,743		
November	176,984		
December	241,663		
Total (Up to May)	945,377	507,311	(46.3)
Total	1,913,702		

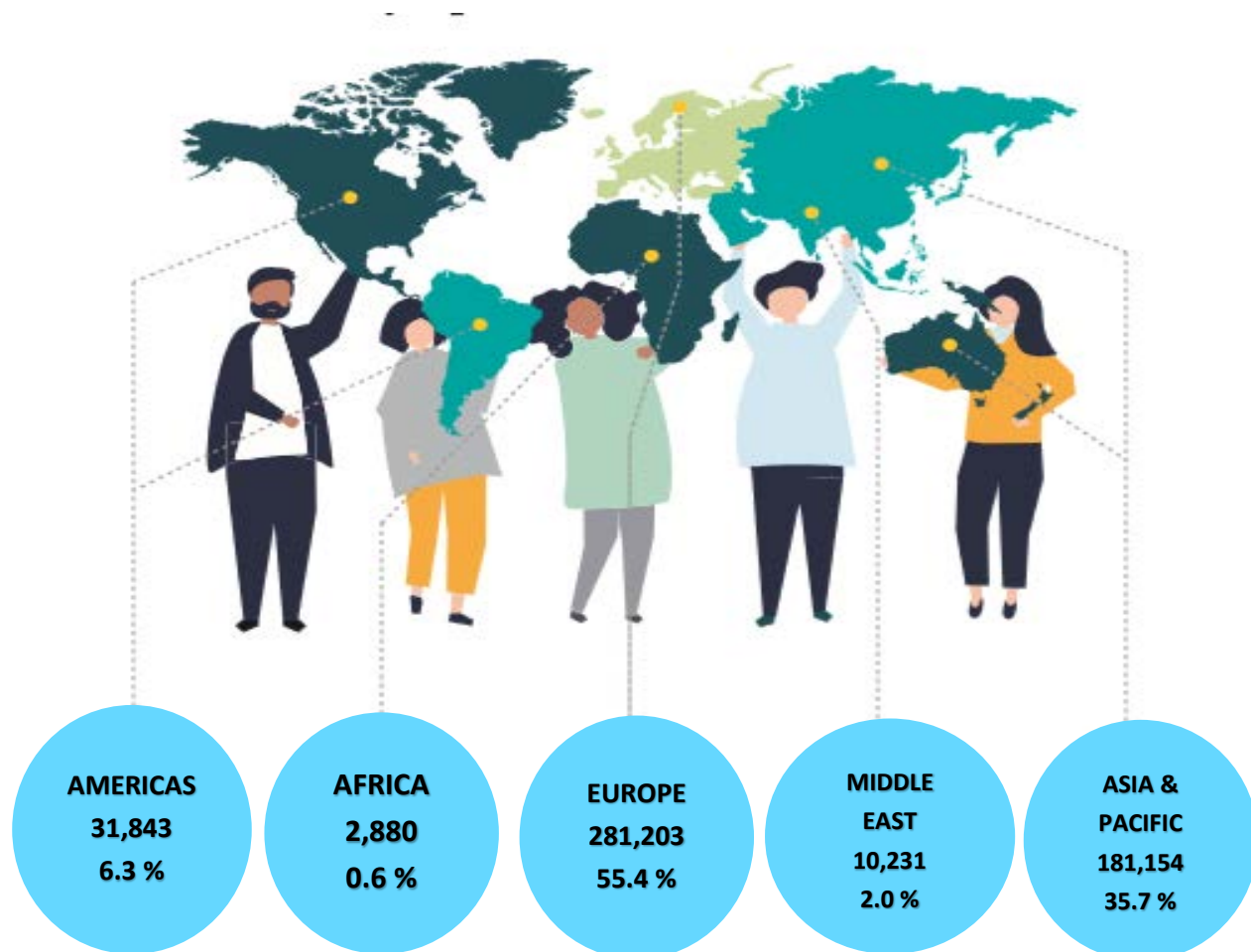


Tourist Arrivals – MAY Zero (0)

(Due to effect of the outbreak of COVID 19)



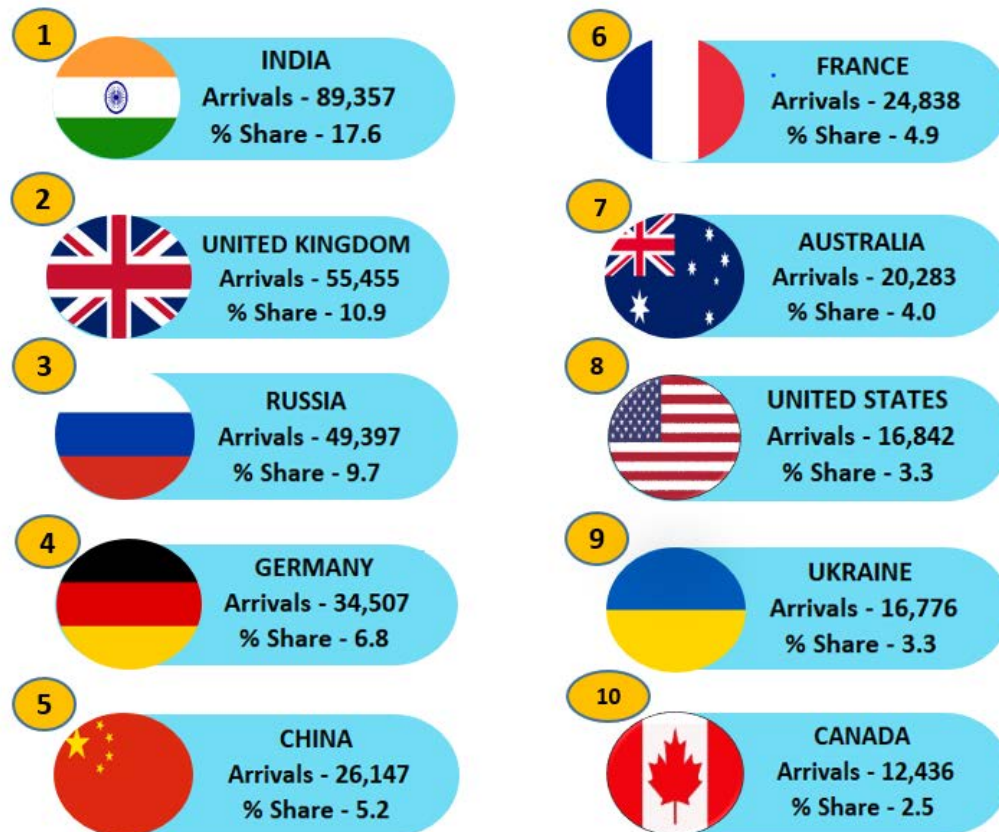
TOURIST ARRIVALS BY REGION AND PERCENTAGE SHARE JANUARY ~ MAY 2020



In comparison to the arrivals from January to May last year the highest decline of 52.9% was recorded for Africa while Asia and Pacific recorded a decline of 52.1%. Americas recorded a decline of 51% whereas Middle East region recorded a decline of 42.6%. A decline of 41.1% was recorded from Europe. The effect of the outbreak of COVID 19 is clearly evident as all countries have recorded a decline in arrivals from mid-February. However, it is noteworthy that arrivals from countries such as Kazakhstan (90.6), Russian Federation (13%) and Poland (9%) have recorded an increase for the above period.

TOP TEN SOURCE MARKETS – JANUARY ~ MAY 2020

India, United Kingdom, Russia, Germany and China were Sri Lanka's top five international tourist generating markets for the period from January to May this year. Except for Russian Federation all the other markets in the top ten list have recorded a decline for the above period. India was the largest source of tourist traffic to Sri Lanka with 17.6 % of the total traffic received in above period. United Kingdom accounted for 10.9 % of the total traffic; while Russian Federation, Germany and France accounted for 9.7 %, 6.8 % and 5.2 % respectively. It is noteworthy that China has recorded the highest decline of 72.2%.



Rank	Country of Residence	Tourist Arrivals from January to May 2020			Tourist Arrivals January to May 2019	% Change Jan ~ May 2020/2019
		By Air	By Sea	Total		
1	India	86,639	2,718	89,357	141,824	(36.9)
2	United Kingdom	49,015	6,440	55,455	113,139	(50.9)
3	Russian Federation	48,457	940	49,397	43,711	13.0
4	Germany	32,495	2,012	34,507	68,126	(49.3)
5	China	25,910	237	26,147	94,064	(72.2)
6	France	24,330	508	24,838	53,412	(53.5)
7	Australia	17,896	2,387	20,283	42,669	(52.5)
8	United States	14,349	2,493	16,842	36,278	(53.6)
9	Ukraine	16,043	733	16,776	17,894	(6.2)
10	Canada	11,122	1,314	12,436	23,636	(47.4)

INTERNATIONAL TOURIST ARRIVALS BY COUNTRY OF RESIDENCE

	January ~ May 2020			Total Tourist Arrivals January to May 2019	% Cha Jan ~ May (2020/19)
	Tourist Arrivals				
	By Air	By Sea	Total		
<u>AMERICAS</u>	27,585	4,258	31,843	64,940	(51.0)
North America	25,723	3,904	29,627	60,816	(51.3)
Canada	11,122	1,314	12,436	23,636	(47.4)
Mexico	252	97	349	902	(61.3)
United States	14,349	2,493	16,842	36,278	(53.6)
Caribbean & Central America	211	15	226	424	(46.7)
Costa Rica	33	0	33	70	(52.9)
Jamaica	23	2	25	35	(28.6)
Others	155	13	168	319	(47.3)
South America	1,651	339	1,990	3,700	(46.2)
Argentina	352	64	416	849	(51.0)
Brazil	675	200	875	1,556	(43.8)
Chile	232	39	271	554	(51.1)
Colombia	190	11	201	328	(38.7)
Others	202	25	227	413	(45.0)
<u>AFRICA</u>	2,510	370	2,880	6,122	(52.9)
North Africa	638	51	689	1,198	(42.5)
Morocco	275	36	311	477	(34.8)
Sudan	137	6	143	212	(32.5)
Others	226	9	235	509	(53.8)
Sub-Saharan Africa	1,872	319	2,191	4,924	(55.5)
Kenya	106	4	110	235	(53.2)
Mauritius	132	38	170	303	(43.9)
Nigeria	25	0	25	80	(68.8)
South Africa	1,144	220	1,364	3,404	(59.9)
Others	465	57	522	902	(42.1)

	January ~ May 2020				
	Tourist Arrivals			Total Tourist Arrivals January to May 2019	% Cha Jan ~ May (2020/19)
	By Air	By Sea	Total		
ASIA & PACIFIC	173,837	7,317	181,154	378,526	(52.1)
North East Asia	36,944	376	37,320	119,945	(68.9)
China	25,910	237	26,147	94,064	(72.2)
Japan	6,613	31	6,644	15,823	(58.0)
South Korea	2,428	71	2,499	5,971	(58.1)
Taiwan	1,949	36	1,985	3,981	(50.1)
Others	44	1	45	106	(57.4)
South East Asia	13,496	1,431	14,927	30,787	(51.5)
Cambodia	372	0	372	2,533	(85.3)
Indonesia	948	166	1,114	1,989	(43.9)
Malaysia	3,433	61	3,494	7,298	(52.1)
Myanmar	473	59	532	1,154	(53.9)
Philippines	3,176	1,073	4,249	6,209	(31.6)
Singapore	2,506	39	2,545	5,942	(57.2)
Thailand	1,857	23	1,880	4,229	(55.5)
Vietnam	699	10	709	1,334	(46.9)
Others	32	0	32	99	(67.7)
Oceania	20,122	2,584	22,706	48,206	(52.9)
Australia	17,896	2,387	20,283	42,669	(52.5)
New Zealand	2,130	194	2,324	5,442	(57.3)
Others	96	3	99	95	4.2
South Asia	103,275	2,926	106,201	179,588	(40.9)
Afghanistan	146	0	146	195	(25.1)
Bangladesh	1,963	23	1,986	3,304	(39.9)
Bhutan	208	0	208	156	(33.3)
India	86,639	2,718	89,357	141,824	(36.9)
Iran	645	3	648	1,811	(64.2)
Maldives	9,404	3	9,407	25,002	(62.4)
Nepal	1,248	136	1,384	2,159	(35.9)
Pakistan	3,022	43	3,065	5,137	(40.3)

	January ~ May 2020			Total Tourist Arrivals January to May 2019	% Cha Jan ~ May (2020/19)
	Tourist Arrivals				
	By Air	By Sea	Total		
EUROPE	265,099	16,104	281,203	477,960	(41.1)
Northern Eur.	68,008	7,138	75,146	153,836	(51.1)
Denmark	4,769	136	4,905	10,890	(54.9)
Finland	2,216	82	2,298	4,686	(50.9)
Norway	2,954	65	3,019	6,655	(54.6)
Sweden	6,899	162	7,061	13,576	(47.9)
United Kingdom	49,015	6,440	55,455	113,139	(50.9)
Others	2,155	253	2,408	4,890	(50.8)
Western Eur.	79,156	3,073	82,229	171,562	(52.1)
Austria	4,188	112	4,300	8,729	(50.7)
Belgium	3,274	97	3,371	6,384	(47.2)
France	24,330	508	24,838	53,412	(53.5)
Germany	32,495	2,012	34,507	68,126	(49.3)
Netherlands	8,492	164	8,656	18,989	(54.4)
Switzerland	6,217	172	6,389	15,394	(58.5)
Others	160	8	168	528	(68.2)
Central / Eastern Europe	97,718	2,655	100,373	104,723	(4.1)
Belarus	2,606	32	2,638	3,014	(12.5)
Czech Republic	7,580	19	7,599	11,814	(35.7)
Estonia	1,177	8	1,185	1,488	(20.4)
Hungary	1,493	95	1,588	2,657	(40.2)
Kazakhstan	2,267	66	2,333	1,224	90.6
Lithuania	1,037	17	1,054	1,609	(34.5)
Poland	11,481	427	11,908	10,927	9.0
Romania	1,574	150	1,724	3,015	(42.8)
Russian Federation	48,457	940	49,397	43,711	13.0
Slovakia	1,488	25	1,513	3,021	(50.0)
Ukraine	16,043	733	16,776	17,894	(6.2)
Others	2,515	143	2,658	4,349	(38.9)

	January ~ May 2020			Total Tourist Arrivals January to May 2019	% Cha Jan ~ May (2020/19)
	Tourist Arrivals				
	By Air	By Sea	Total		
Southern / Mediterranean Europe	20,217	3,238	23,455	47,839	(51.0)
Greece	1,092	481	1,573	3,141	(49.9)
Italy	7,135	1,468	8,603	19,860	(56.7)
Portugal	1,377	225	1,602	2,617	(38.8)
Spain	3,255	130	3,385	9,076	(62.7)
Turkey	1,517	604	2,121	2,142	(1.0)
Israel	3,422	134	3,556	6,082	(41.5)
Others	2,419	196	2,615	4,921	(46.9)
MIDDLE EAST	10,139	92	10,231	17,829	(42.6)
Bahrain	543	6	549	864	(36.5)
Egypt	922	34	956	1,560	(38.7)
Iraq	137	1	138	327	(57.8)
Jordan	621	6	627	1,270	(50.6)
Kuwait	822	3	825	1,542	(46.5)
Lebanon	480	3	483	2,113	(77.1)
Oman	1,041	4	1,045	1,540	(32.1)
Qatar	128	1	129	526	(75.5)
Saudi Arabia	4,745	10	4,755	5,605	(15.2)
United Arab Emirates	350	2	352	1,703	(79.3)
Others	350	22	372	779	(52.2)
TOTAL	479,170	28,141	507,311	945,377	(46.3)

* All visitor arrival statistics in this report are from the Department of Immigration & Emigration.

Sri Lanka suspends tourist arrivals from all countries from 18th March 2020 due to COVID-19